



Label Rewinder Family

# T10 / T20

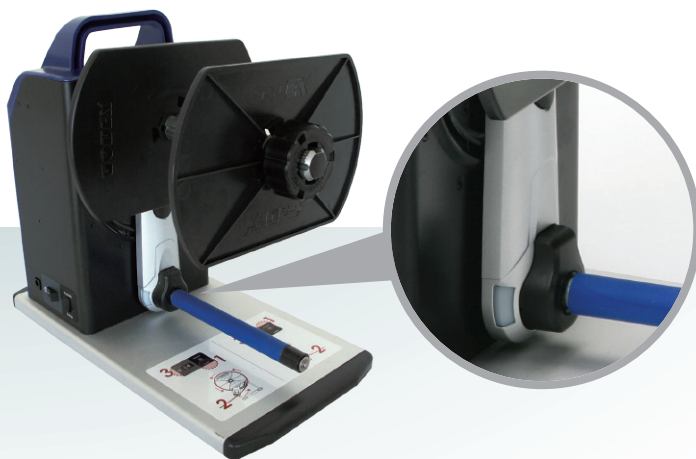
## The Rewinder Everyone Can Use

The T10 / T20 rewinder has an idler arm that can be positioned to rewind labels from either side of the printer.

Depending on the user's requirements, the rewinder can rewind "inside or outside" label rolls.



VR(Speed Adjustment)



Colored LED indicator provides rewinder operation status

# T10 /T20

## Label Rewinder Family

| Model   |                | T10  | T20               |
|---|----------------|--|-------------------|
| Paper width   |                | 4.72" (Max.)   | 7" (Max.)         |
| Rewind Speed  |                | Auto mode: 14 IPS (max)<br>Fixed: 2~15 IPS                                   |                   |
| Label Roll  |                | 8" (Max.)  | 6" (Max.)         |
| Core Roll   |                | Coreless, 1" (25.2~25.6mm), 1.5"x2 (37.4~38.0mm & 40~40.6mm), 3" (76~76.6mm) |                   |
| Label Roll Weight   |                | 5 Kg   |                   |
| Rewinding   |                | Label Inside / Outside   |                   |
| Switches  |                | Rewind   |                   |
| Motor   |                | Hybrid Motor   |                   |
| Power   |                | 100~240VAC 24W, 24V Adapter  |                   |
| Environment   | Operation Temp | 41°F to 104°F (5°C to 40°C)  |                   |
|   | Storage Temp   | -4°F to 122°F (-20°C to 60°C)  |                   |
| Humidity  |                | 10-85% (non-condensing RH)   |                   |
| Size (H*W*D)  |                | 303mm*180mm*349mm  | 303mm*180mm*394mm |
| Agency Approvals  |                | CE, FCC Class A  |                   |
| Weight  |                | 5 Kg (11 lb)   |                   |
| * Specifications are subject to change without notice. All company and/or product names are trademarks and/or registered trademarks of their respective owners. |                |  |                   |